

VERSA-LOK BRONCO 18H

RETAINING WALL SYSTEM



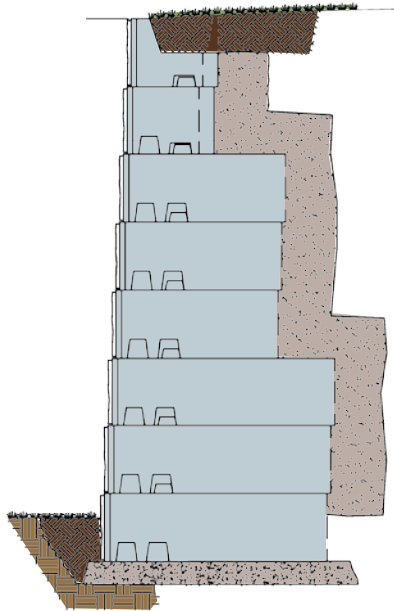
NEED TO SUPERSIZE? MEET THE HEAVYWEIGHT.

When you've got a project that requires a heavy-duty retaining wall, call for Bronco 18H, the new heavyweight segmental wall system from VERSA-LOK. Weighing in from 1,225 to 3,215 pounds and displaying 6 square feet of face area and a 3.2° batter, Bronco 18H has the heft and coverage to tackle any job. Alignment knobs molded into the top of units and channels molded into the bottom ensure correct near-vertical positioning and allow for tight joints with variable-bond construction.

The Bronco 18H system comprises 13 units: three retaining wall units with varying depth, half unit, three freestanding units, L/R corner units, university flat cap, cap unit and L/R corner caps. Bronco 18H can be used for walls up to 15 feet tall without soil reinforcement, making it ideal for projects with excavation constraints. It easily accommodates geogrid, such as VERSA-Grid, for taller walls. With near vertical construction and variable bond, Bronco 18H is more versatile than other comparable products. After installation, the natural stone appearance of the Bronco 18H wall face can be enhanced with stain to blend into the natural environment.

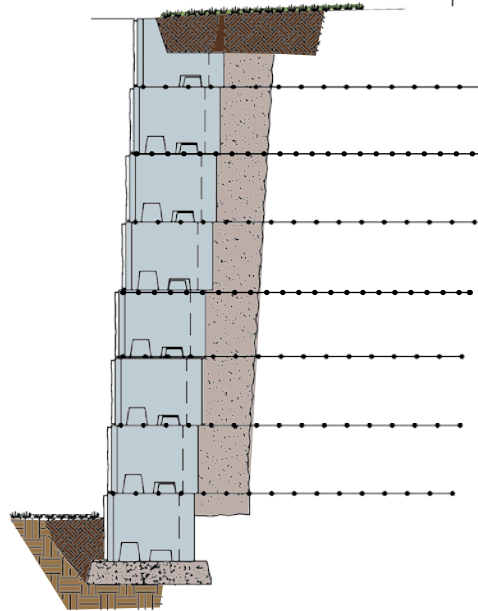
VERSA-LOK BRONCO 18H

RETAINING WALL SYSTEM

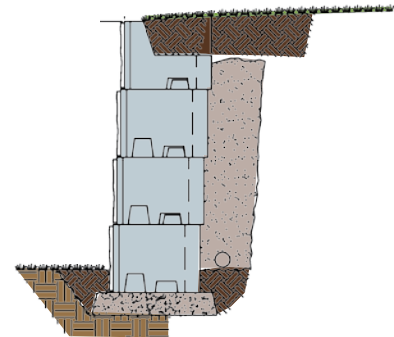


**GRAVITY WALL
EXTENDED DEPTH UNITS*
(NO GRID)**

*Maximum height of 6 ft. to 15 ft.
depending on unit depths and
site conditions



**REINFORCED WALL
24" UNITS
(VERSA-GRID)**



**GRAVITY WALL
24" UNITS**
(NO GRID)**

**Maximum height of 5 ft.
depending on site conditions

VERSA-LOK BRONCO 18H RETAINING WALL UNITS



24" Deep Unit
1,225 lbs.



41" Deep Unit
2,225 lbs.



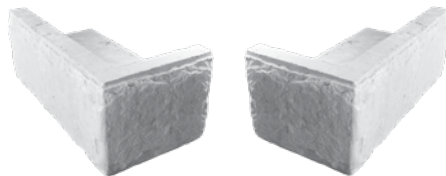
60" Deep Unit
3,215 lbs.



Cap Unit
900 lbs.



Half Unit
695 lbs.



Corner Cap (left & right)
1,145 lbs.



Corner Unit (left & right)
1,425 lbs.



Universal Flat Cap
550 lbs.



Freestanding Half Unit
605 lbs.



Freestanding Unit
1,285 lbs.



Freestanding End Unit
1,345 lbs.