



**HARDSCAPE PRODUCTS FOR STUNNING HOSPITALITY ENVIRONMENTS**





VERSA-LOK Retaining Wall Systems and Willow Creek Paving Stones from VERSA-LOK Midwest can help you create beautiful, functional outdoor spaces for hospitality businesses and their guests. From courtyards with columns to raised patios with seat walls, our hardscape products are a stunning solution for hospitality businesses that wish to expand, refresh or extend their outdoor service.

**Products ..... 1-2**

**Golf Course ..... 3-4**

**Outdoor Dining ..... 5-10**

**Hotel Spaces ..... 11-12**

**Corporate Amenities.... 13-14**

Landscape architects, designers, engineers and specifiers choose VERSA-LOK for its ability to build in-demand features for the hospitality industry: raised patios, retaining walls, sitting walls, columns, planters, fire/water features, stairs and more.

## VERSA-LOK Retaining Wall Systems



## Capstone, Countertops & Stair Treads





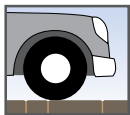
## Willow Creek Paving Stones



### Applications



Pedestrian



Vehicular

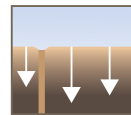


Permeable  
Joints

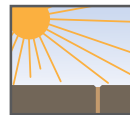
### Infusion Technology Benefits



Stain  
Resistant



Infused  
Protection



Resists  
Fading

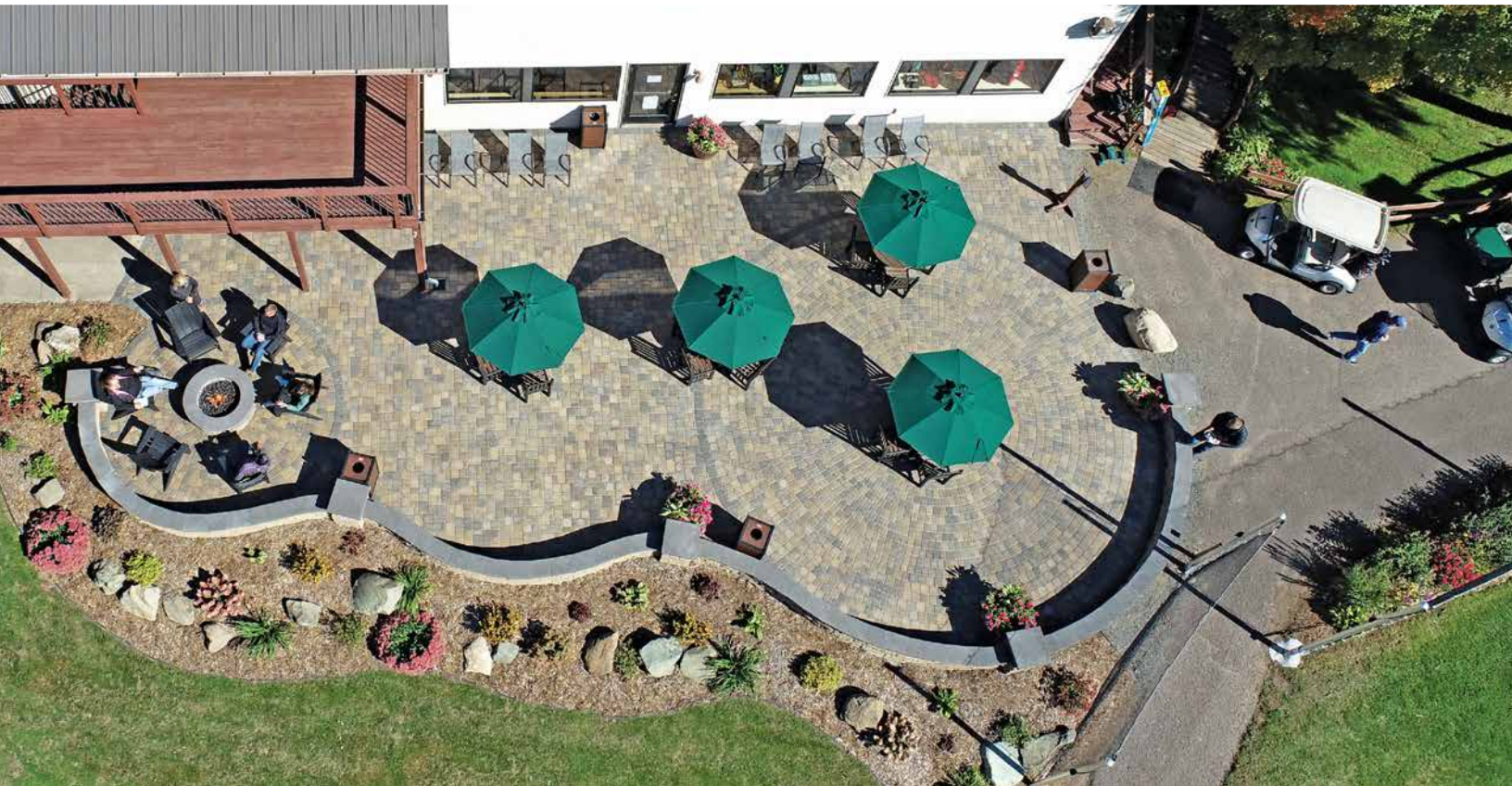
Willow Creek's **Select Series™** pavers incorporate **Infusion™ technology**, which provides paver protection from the inside out. Select Series pavers have enhanced color longevity, heightened durability, additional stain-resistant properties and a long service life — perfect for high traffic environments.

Our products combine high-strength concrete with classic and contemporary shapes, tones and textures that can be mixed and matched for beautiful results. Our hardscape products are engineered to withstand extreme seasonal weather cycles while meeting the most demanding challenges of the hospitality industry.

## Ledgestone in Weathered & Smooth Textures







## Luck be a Patio

The Municipal Golf Course in Luck, WI, was having a bit of bad luck when the COVID-19 pandemic closed all but essential businesses. Course superintendent Kevin Clunis spent that time making improvements and thinking about ways to add value for customers at the beautifully landscaped course on Big Butternut Lake.

“COVID got us thinking about how to get more people here and how to keep them here longer,” said Clunis. The original 9-hole municipal course was built in 1937 by the Works Progress Administration during the Great Depression. The goal was to put people to work and stimulate the local economy. The course opened in 1938 with 38 members.

Luckily, early re-opening of outdoor recreational businesses brought the golfers back in droves. Clunis noticed that golfers continued to gather outside after their rounds, so he had chairs and tables put up on the grass. A decision was made to raise funds for an outdoor patio.

**“We wanted to continue adding value for our guests, so we thought a patio would keep guests here longer and provide additional space for groups and tournaments,”** said Clunis. **“Our numbers just shot through the roof.”**

Balsam Lake Pro-Lawn designed a raised patio with serpentine curves facing the greens, complete with a fire pit. The design has been successful in getting golfers to linger longer, plus the patio reinvigorated food and beverage service at its snack bar, open daily, and its restaurant, open three days per week.







Now, the course — with the expertise of Balsam Lake Pro-Lawn — is planning phases two and three to expand the patio around more sides of the club house. “The goal was to get people to stay for a drink or dinner and to have a space for outdoor gatherings and events,” said Jon Hol, owner of Balsam Lake Pro-Lawn. “It was a huge success. We’ll begin construction on the second phase this fall and finish next spring.”

VERSA-LOK Standard in Weathered Chestnut Blend was selected for the retaining wall to support the raised patio and create seat walls. For the serpentine wall, the crew cut every other VERSA-LOK standard unit in half, Hol said. **“They wanted a tighter curve for the solid sitting wall, and VERSA-LOK is the one block that does everything.”**

For the paver surface, Hol suggested Willow Creek’s Circlestone pavers to create two large circles tucked into the curves as well as Willow Creek Cobblestone in Lakeshore Blend for the paver field. A contrasting soldier course of pavers sets off the circles, using Willow Creek Cobblestone ¾ Stone in Black. A Willow Creek LedgeStone Fire Ring Kit with a gas insert fits in one of the paver circles and is a favorite gathering spot for customers. All paver products are in the Weathered finish for a rustic feel.

“We were happy to help the golf course create a whole new culture of outdoor dining,” said Hol. “I’ve been using VERSA-LOK for 30 years, and the support I get from my sales reps is always top-notch.”



**Location:** Luck, WI

**Owner:** City of Luck

**Designer/Installer:** Balsam Lake Pro-Lawn, Balsam Lake, WI

**Products:** VERSA-LOK Standard retaining wall units in Weathered Chestnut Blend, Willow Creek Cobblestone in Weathered Lakeshore Blend, Circlestone in Weathered Lakeshore Blend, Cobblestone ¾ Stone soldier course in Weathered Black, LedgeStone Fire Ring Kit in Lakeshore Blend and Capstone Coping, Column and Fire Ring caps in Black.





**Location:** Hudson, WI

**Owner:** Pete Foster, San Pedro's Café & Pedro del Esté

**Designer/Installer:** Landscape Specialties, Woodbury, MN

**Product:** VERSA-LOK Standard retaining wall units in Lakeshore Blend, Willow Creek Cobblestone in Lakeshore Blend and Capstone Coping in Walnut Brown.

## Year-Round Patios Wow Diners

When a building next to the San Pedro Café in Hudson, WI, came up for sale, café owner Pete Foster wanted it primarily so he could build multi-level, all-season patios behind his two restaurants.

Since opening the popular San Pedro Café in 2000 and building a small patio behind it in 2001, Foster had always wanted to expand outdoor dining but was limited by property lines. Pedro del Esté, around the corner from the San Pedro Café, sits behind the original patio. The adjacent building for sale was an opportunity Foster could not pass up.

"Patios in this day and age are essential to doing business in the restaurant arena," said Foster. "We have a lot of competing, neighboring patios, we've got a beautiful river a block away, and we are a Caribbean-themed restaurant. So it seemed very fitting for us to provide a very comfortable outside space for our guests."

Foster is excited about the options the patios provide. **"Our plan is to heat and seat our patios year-round, whether for customer dining or as a private event venue."**

Foster enlisted Landscape Specialties, which had completed the original patio at San Pedro Café. The new design entailed multi-level patios with structural pergolas that serve both restaurants.





## “Patios in this day and age are essential to doing business in the restaurant arena.” — Pete Foster

**“The reason we chose VERSA-LOK Standard on this project was for its versatility,”** said Jeff Ondrusik, who co-owns Landscape Specialties with his brother, Eric. **“Three or four different applications with the same block is really handy for a challenging project like this.”**

Because space was tight, Jeff’s crew had to hand-trench gas lines, and the electrical utilities had to be restrung higher to accommodate the structural pergolas. The pergola columns serve as conduits for audio wires and utilities. “We were able to put power outlets within the sitting walls so that the patios could be used for catered events, too,” said Ondrusik.

Five-foot-deep concrete footings secure the StruXture pergolas, and the VERSA-LOK Standard retaining wall system in Lakeshore Blend was used for the raised patio foundations as well as surrounding seat walls, step-down walls, stairs, waitstaff stations and a planter below the sitting wall that divides the upper and middle patios.

The sitting walls were fitted up to the pergola’s columns, and the stair railings were set within the VERSA-LOK units. The dining areas are heated with infrared and forced air ceiling heaters. The louvered roofs on the structured pergolas open up, and side window walls can be rolled up for open-air use.

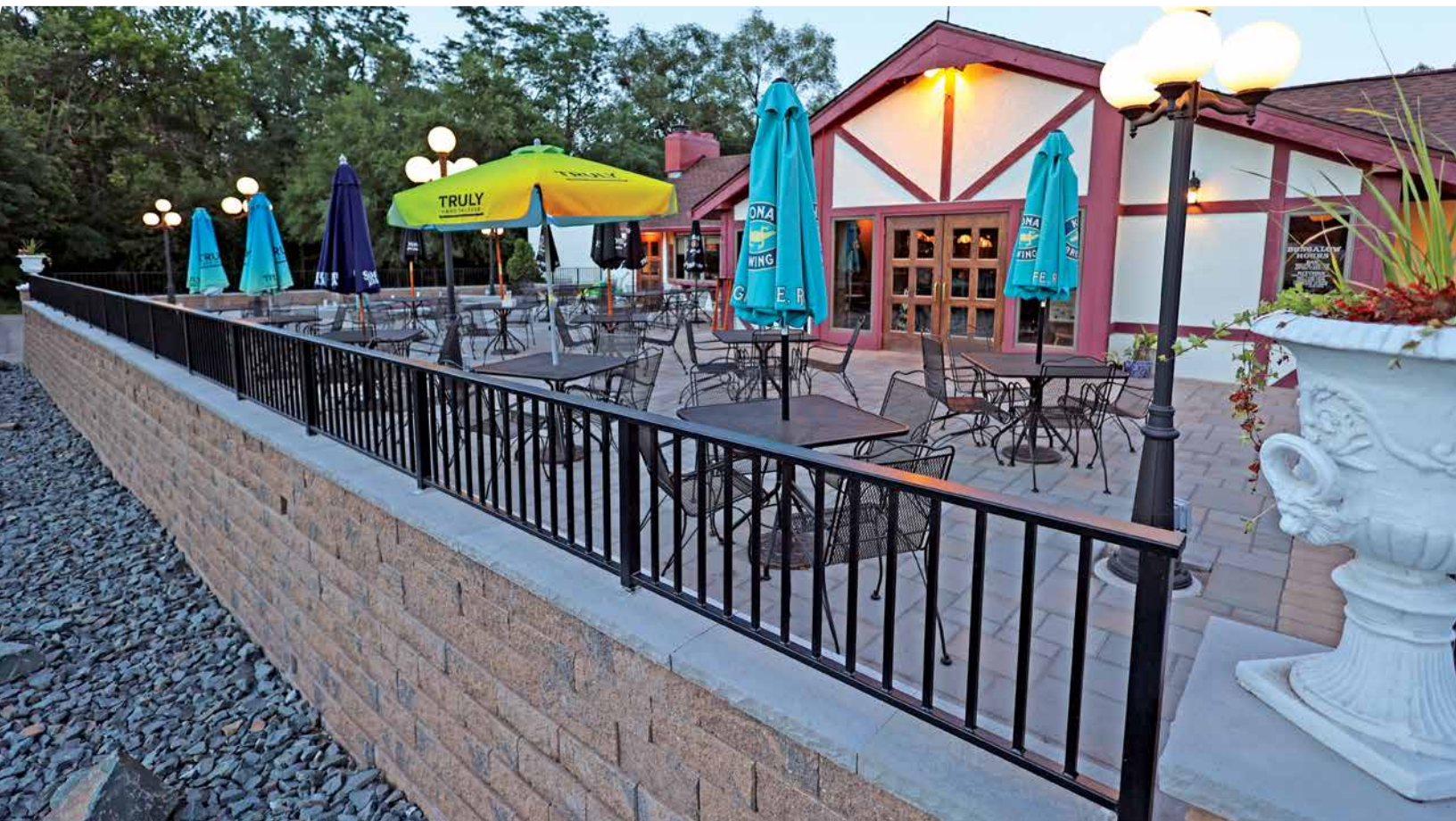
The patio was engineered to control for rain and wash water, with drains in the paver surface to shuttle water through the columns, where it is pumped to the municipal storm system.

Willow Creek Cobblestone pavers in Lakeshore Blend were used to match the original patio pavers and to construct an ADA-compliant ramp. Polymeric sand, which stays in place between the pavers, was used to protect the drain and stormwater system and creates an easy-to-clean surface.

To soften the hardscapes of the enclosed patios, Jeff designed a planter below the sitting wall that divides the middle and upper patios. Potted plants and plantings create a tropical feel, perfect for the café’s ambience.

“We were pleased that we could use one VERSA-LOK block for multiple applications and were able to create waitstaff stations with VERSA-LOK, with marble countertops,” said Ondrusik. **“I’ve been using VERSA-LOK for 25 years, and we use it consistently for its ability to create just about any feature we need.”**





## Supper Club Patio Raises the ‘Steaks’

The owners of the Bungalow Inn wanted an outdoor patio that would be a focal point for the busy restaurant in Lakeland, MN. Many people have fond memories of the supper club that has been around since 1933, but none of those memories were made on a beautiful outdoor patio.

Jim Peterreins, general manager at Friedges Landscaping, employed the VERSA-LOK Standard retaining wall system to create the foundation for a raised patio, as well as steps and perimeter walls. The patio occupies a front parking area that was seldom used as the restaurant has large lots to the south and east that are big enough to host car shows.

“The VERSA-LOK Standard retaining wall system is great to work with, making it easy for creating curves, corners, columns and steps, plus using split units and units with textured front and back faces,” said Peterreins. “We used Willow Creek Slatestone Grande in the Smooth finish for the patio, and what was nice for the crew is that the larger size pavers go down quicker. The smooth surface is great for tables and chairs too.”

**“The Bungalow is really a landmark,”** Peterreins said. **“Customers would come up to us while we were working and share memories of the place — wedding and anniversary celebrations over the years — and how excited they are to be able to dine outside.”**



**Location:** Lakeland, MN

**Owner:** Bungalow Inn

**Designer:** Mainly Details Architectural Design, St. Paul, MN

**Installer:** Friedges Landscaping, Lakeville, MN

**Products:** VERSA-LOK Standard retaining wall units in Lakeshore Blend, Willow Creek Slatestone Grande Smooth pavers in Bleu, Cobblestone 6 x 9 sailor course in Tan and Capstone Coping in Black.









## Cost-Effective Patio is Customer Favorite

The Bear Town Bar and Grill in White Bear Lake, MN, doesn't have an uncomfortable seat in the house — or outside!

Thanks to the VERSA-LOK retaining wall system and Willow Creek paving stones, the tavern expanded outdoor seating to enhance its customer experience.

Every seat in the dining room and bar has a padded chair, so a comfortable spot inside wasn't a problem. The only thing lacking at this cozy eatery that serves up American comfort food on U.S. Highway 61 was a seat outside.

The owner contacted Lind Landscaping to come up with a simple yet elegant patio design for guests. For the patio, Lind and the owner selected Willow Creek Cobblestone in Bronze Blend for the paver field.

To enclose the patio, Lind built pillars, made with VERSA-LOK Standard in Bronze Blend. He also wired the columns to include low voltage lights and used a course of glass block in the columns for ambient lighting. Natural timbers between the columns created the fence.

**"The pillars were very simple to do using the VERSA-LOK Standard retaining wall system,"** said Bob Lind, who owns Lind Landscaping. **"We were able to split Standard units right on site, making it easy."**



**Location:** White Bear Lake, MN

**Owner:** Bear Town Bar & Grill

**Designer/Installer:** Lind Landscape & Design, Lake Elmo, MN

**Products:** VERSA-LOK Standard retaining wall units in Bronze Blend, Willow Creek Cobblestone in Bronze Blend and Capstone Column Caps in Canyon Gray.













## Maximum Views of the Mississippi River

When owners of a Courtyard by Marriott wanted to enhance their guest experience, they relied on Ziegler's Landscape by Design to create a beautiful space for guests while showcasing the stunning riverfront.

On the banks of the Mississippi River in downtown La Crosse, WI, the popular hotel had a small concrete patio that proprietors had long wanted to expand. Their vision was that the space would allow hotel guests and visitors to dine, relax and enjoy unfettered river views.

**"The Marriott had a very small concrete patio that was cracking,"** said Tim Markgren, a landscape architect with Ziegler's. **"With the upgrade, the patio is now enjoyed a lot for its amazing views of the Mississippi."**

The solution was a raised patio using the VERSA-LOK Standard retaining wall system, with Willow Creek Cobblestone pavers in Rose Creek Blend and Prairie Tan accents. Willow Creek Brickstone pavers in Black surround the patio for a contrasting, definitive border. VERSA-LOK was also used for the steps from the patio to the grassy area of the riverfront.

Willow Creek LedgeStone units were used for cylindrical planters that are staggered along the patio's edge. Inset lighting adds a gentle evening glow, and a customized LedgeStone Fire Pit Kit creates a cozy sunset-watching spot.



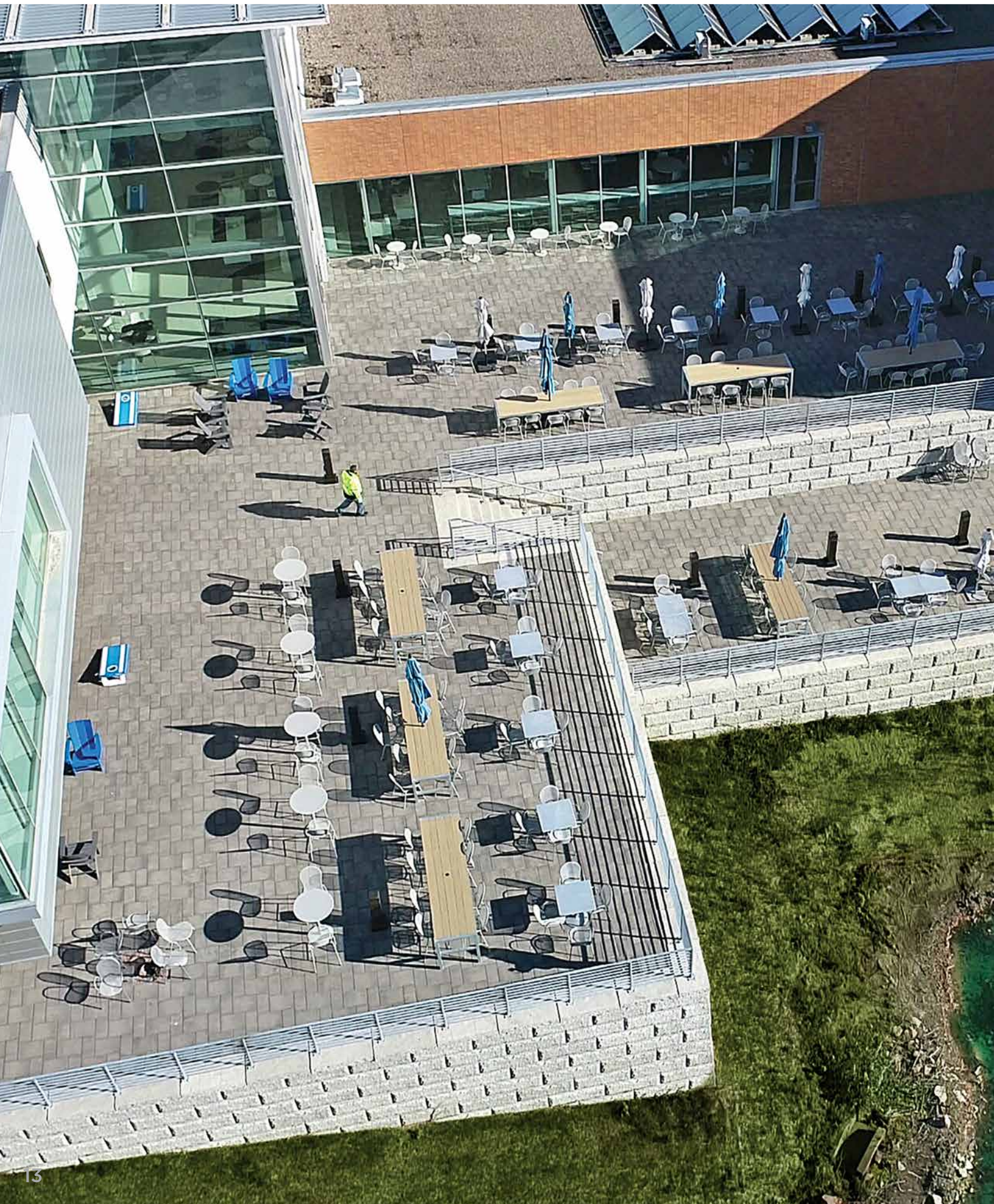
**Location:** La Crosse, WI

**Owner:** Courtyard by Marriott

**Installer:** Ziegler's Landscape By Design, Onalaska, WI

**Product:** Willow Creek Cobblestone in Rose Creek Blend, Circlestone in Chestnut Blend, LedgeStone Tapered in Chestnut Blend, Capstone Coping in Walnut Brown, VERSA-LOK Standard retaining wall units in Chestnut Blend and Willow Creek Bullnose in Black.









## Employees Enjoy Multi-Level Corporate Outdoor Space

This Minnesota company, a leading software developer, offers many amenities to its employees.

They enjoy an on-site cafeteria, fitness center, walking trails, gardens and open workspaces. A recent addition was a renovation to its outdoor patio space for employees, visitors and clients.

The project utilized the VERSA-LOK Bronco 18H retaining wall system for the raised patios. Bronco 18H Flat Cap units were used to finish the walls and also to create an 8-foot grand stairway to the top tier of the patio. The Flat Cap Universal units at 24" deep and 6" high allowed the installer a deeper concrete run under the 6" rise steps to maintain sufficient overlap of each stair riser.

The paver surface is Willow Creek Slatestone Smooth in Ash, creating a beautiful patio space where employees can relax, enjoy breaks and collaborate outside.

One challenge is that the project had to maintain ADA compliance for the top tier patio. Multiple pitches and slopes had to be blended together from different door elevations while maintaining proper surface drainage off the patio.



**Location:** Minneapolis/St. Paul, MN

**Owner:** Private Company

**Installer:** Crow Wing Gardens, Nisswa, MN

**Product:** VERSA-LOK Bronco 18H retaining wall system in Natural Gray and Willow Creek Slatestone Grande Smooth in Ash.



**VERSA-LOK**  
MIDWEST



**CONTACT US ABOUT YOUR NEXT HARDSCAPE PROJECT OR FOR OUR COMPLETE CATALOG!**

**1-800-770-4525 • [INFO@VERSA-LOK-MIDWEST.COM](mailto:INFO@VERSA-LOK-MIDWEST.COM)**

**[VERSA-LOK-MIDWEST.COM](http://VERSA-LOK-MIDWEST.COM)**

